

KING COUNTY LAND CONSERVATION INITIATIVE



20,600*
acres

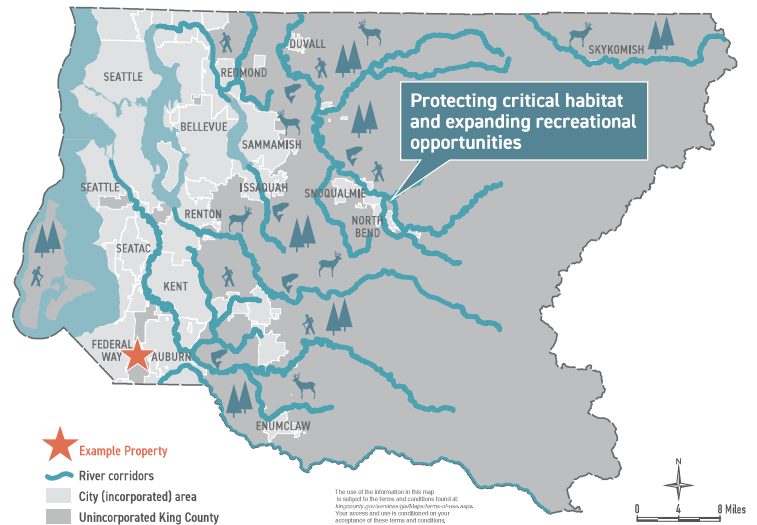
Natural lands for wildlife,
recreation, and resilience
in an uncertain future.

* Includes acreage in Rivers category.

Category Example

Weyerhaeuser Campus, Federal Way

The Weyerhaeuser campus encompasses the west shore of North Lake, featuring forest and meadow habitat, seven miles of trails, and the acclaimed Rhododendron Species Botanical Garden and Pacific Bonsai Museum. The community organization Save Weyerhaeuser Campus is working with the City of Federal Way to preserve the campus' lakefront forests and trails, which is a good example of the natural lands and urban green space land categories prioritized in the Land Conservation Initiative.



Example Property

